

<https://doi.org/10.30546/300045.2026.03.1.518>

COMBINED EFFECT OF NaCl AND Na₂SO₄ SALTS ON NADPH - GENERATING ENZYMES IN MAIZE SEEDLINGS AT DIFFERENT RATIOS

Naila Aliyeva*, Ziyaddin Mammadov

Baku State University, 23 Z. Khalilov St. AZ-1148, Baku, Azerbaijan

Received 24 november 2025; accepted 27 december 2025

Abstract

Maize (*Zea mays* L.) seedling growth and activity dynamics of G6PDH (Glucose-6-phosphate dehydrogenase, EC 1.1.1.49), NADP-ME (NADP-malic enzyme), EC 1.1.1.40) and NADP-ICDH (NADP-isocitrate-dehydrogenase, EC 1.1.1.42) enzymes were studied under combined stress conditions created by NaCl and Na₂SO₄ salts solution. With regard to the development of seedlings (control), the activity of the G6PDH enzyme gradually decreases and this decrease in 12-day-old seedlings is 35.6% compared to 4-day-old seedlings. On the contrary, during this development phase, the activity of the NADP-ME and NADP-ICDH enzymes has increased by 37% and 13.4%, respectively in comparison with the initial period. This indicates that the formation of cytoplasmic NADPH potential in the early stages of the development of the Zagatala locally improved genotype seedlings is mainly mediated by the activity of G6PDH enzyme, and in the later stages, mainly the activity of the NADP-ME and NADP-ICDH enzymes.

Keywords: *maize seedlings; salt stress; combined stress; NADPH-generating enzymes*

1. Introduction

Most of the plants are subjected to negative impacts of extreme environmental conditions to varying degrees. In order to complete their ontogenesis normally and eliminate the consequences of these negative impacts, they must first generate special protective responses and activate particular adaptation mechanisms to adjust to that environment [8]. Both the initial defense and the adaptation processes are complex in nature and cover many molecular-genetic and biochemical aspects of plant cells. Implementation of both processes often requires the involvement of the NADPH molecule as a universal reduction metabolite [5].

NADPH is one of the most important high-energy cell metabolites present in all living organisms. As it is involved in the biosynthesis of several biomolecules, including fatty acids, carbohydrates, and others, it is required for the growth, development, and reproduction of cells [7]. Therefore, it is reasonably believed that the antioxidant potential of a plant cell is directly linked to the amount of reduced metabolite supply [12]. There are several enzymes that help keep the NADPH balance of plants at a certain level. Glucose-6-phosphate dehydrogenase (G6PDH, EC 1.1.1.49), NADP-malic enzyme (NADP-ME, EC 1.1.1.40), and isocitrate dehydrogenase (NADP-ICDH, EC 1.1.1.42) are the major enzymes.

The current subject was conducted for the study of the defense system of maize seedlings grown under extreme conditions created by the individual and combined effects of NaCl and Na₂SO₄ salt stress. It has been dedicated to the study of the activity of G6PDH, NADP-ME, and NADP-ICDH enzymes.

¹* Corresponding author. Tel.: +994 50 211 40 83
E-mail address: naila.aliyeva.bk.2018@gmail.com

2. Materials and Methods

As an object of the research, the Zagatala locally improved genotype of corn plant (*Zea mays* L.) belonging to C₄ plants group was selected. Irrigation through the relevant salt solutions (NaCl and Na₂SO₄) has been carried out to create salt stress.

The activity of the NADPH-generating enzymes has been determined spectrophotometrically, at a wavelength of 340 nm using an MRC (Israel) spectrophotometer in accordance with the rate of reduction of NADP in 1.0 ml spectrophotometric cuvettes. The reaction has been done at 23-25 °C, and the measurements have been repeated 5 times. Plant tissue was homogenised with the extraction buffer in a 1: 5 (w/v) ratio following established procedures [1, 2].

3. Results and discussion

Has been studied the individual and combined effects of NaCl and Na₂SO₄ salts at different concentrations on maize seedlings.

The individual and combined effects of NaCl and Na₂SO₄ salts at different concentrations on maize seedlings were studied.

Plants are generally more sensitive to extreme stress factors during the initial stages of their development [13]. The impact of stress on the development of seedlings has been observed on 4th, 8th, and 12th days of the germination process. Impact on the developmental change of the root and stem system of maize genotypes has been given in Table 1.

Table 1. Impact of combined salt stress containing NaCl and Na₂SO₄ on the maize seedling

Variants	Days	Day 4	Day 8	Day 12
	Control		leaf 5.1±03 root 3.2±02	leaf 7.4±03 root 4.8±02
NaCl 100 mM		leaf 3.5±03 root 2.9±01	leaf 5.1±01 root 3.8±02	leaf 6.0±01 root 4.5±02
NaCl 75 mM 25 mM Na ₂ SO ₄		leaf 3.3±02 root 2.6±01	leaf 4.4±02 root 3.4 ±01	leaf 5.2±01 root 4.2±03
NaCl 50 mM 50 mM Na ₂ SO ₄		leaf 3.0± 01 root 2.3±02	leaf 4.2±03 root 3.0±02	leaf 5.0±02 root 3.8±03
NaCl 25 mM 75 mM Na ₂ SO ₄		leaf 2.7 ±02 root 2.0±03	leaf 3.7±01 root 2.6±01	leaf 4.4±02 root 3.1 ±01
Na ₂ SO ₄ 100 mM		leaf 2.2±01 root 1.7±02	leaf 3.1±01 root 2.3±02	leaf 3.8±01 root 2.7±02

As can be seen from the table (Table 1) both salts lead to an increase in stress. The gradual replacement of NaCl salt by Na₂SO₄ in the environment led to a further increase in this variation in proportion to the concentration of Na₂SO₄ salt in the environment

Impact of NaCl and Na₂SO₄ salts on NADPH - generating enzymes in maize seedlings. With regard to the development of the Zagatala locally improved maize genotype seedlings, the activity dynamics of NADPH - generating enzymes and results of the individual and combined impact of NaCl and Na₂SO₄ salt solutions on the course of this process have been illustrated in Table 2.

Table 2. Impact of combined NaCl and Na₂SO₄ salts on the activity of NADPH - generating enzymes in the maize seedlings

Variants	G6PDH activity			NADP-ME activity			NADP-ICDH activity		
	day 4	day 8	day 12	day 4	day 8	day 12	day 4	day 8	day 12
Control	103.3	80.4	66.5	77.6	95.4	106.3	93.6	108.1	106.6
100 mM NaCl	110.1	99.8	76.2	88.7	117.3	123.4	96.8	105.5	108.3
50 mM NaCl +	97.8	91.1	75.4	84.4	99.7	110.0	98.3	109.8	113.6

50 mM Na ₂ SO ₄									
100 mM Na ₂ SO ₄	92.3	77.1	67.8	80.3	96.2	99.6	105.7	121.1	127.9

According to the results obtained, the increase in the concentration of Na₂SO₄ salt compared to NaCl salt in the solution has an extremely negative impact on the growth of both root and stem systems of seedlings. Increasing the rate of concentrations of both Na₂SO₄ and NaCl salts and their continuous effect has caused the plant stagnation. Under the salinity stress condition, it's been observed the induction of the activity of G6PDH enzyme in the early stages of the growth of the root system of seedlings, and the activity of DMDH enzyme in the relatively later stages. The activity of the NADP-ICDH enzyme has not been subjected to significant changes compared to other enzymes. The influence of Na₂SO₄ on the induction of the activity of all three enzymes has been higher than that of NaCl. Similar results have been made with respect to the tissues of the stem system, however, the effect of salts on the course of the process has been relatively low in this regard [1].

Study of Electron Paramagnetic Resonance (EPR) in Zagatala locally improved maize genotype seedlings. In our research work, Electron Paramagnetic Resonance (EPR) has been analyzed under the control and NaCl conditions in order to study the paramagnetic centers in seedlings of different genotypes of maize plant. Paramagnetic centers in different genotypes of maize seedlings exposed to NaCl (100 mM) solution have been studied through the EPR method and comparatively analyzed with control samples (Fig. 1).

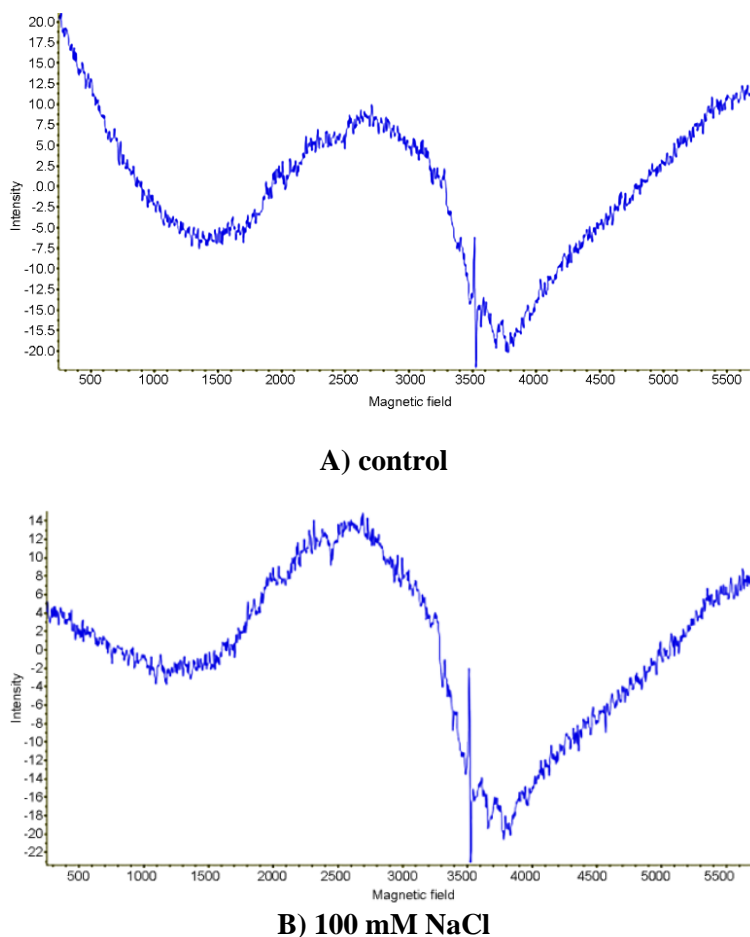


Fig. 1. EPR spectra in maize seedlings (control a) and 100 mM NaCl b))

As can be seen from the figure 1, the intensity of the free radical signal ($g=2.0023$) in the control sample is significantly lower than the intensity of the signal generated in the sample exposed to salt stress (A and B). At the same time, when we compare the broad EPR signals generated in both samples, it can be clear that the amplitude of the broad EPR signal in maize seedlings exposed to salt stress is higher than in the control sample (Fig. 1. A and B). The values obtained in this regard are in close agreement with those obtained for other species of C₃ and C₄ plants [6].

4. Conclusions

The research work studies the characteristics of the activity dynamic of enzymes with different dynamics depending on the nature of stress factors. Thus, it has been observed that the activity of G6PDH and NADP-ME enzymes has mainly been used in the process of eliminating the impacts of NaCl salt, and the activity of NADP-ICDH enzyme has been used in eliminating the complications of Na₂SO₄ salt. Also, in the initial phase of plant development, G6PD enzyme has scored a higher value, whereas, in the later stage, NADP-ME and NADP-ICDH enzymes have gotten higher values. In order to study the paramagnetic centers in Zagatala locally improved genotype of maize seedlings, the Electron Paramagnetic Resonance (EPR) has been studied under the control and impact of NaCl conditions, and the amplitude of the broad EPR signal has been recorded to be higher in the variants exposed to stress compared to the control sample.

References

- [1] Aliyeva NZ. Individual and combinative effect of NaCl and γ -radiation on NADPH-generating enzymes activity in corn (*Zea mays* L.) sprouts / N.Z.Aliyeva, A.N.Nasibova, Z.M.Mammadov [et al.] // *Heliyon*, 2023. 9 (2), p. 1-10.
- [2] Aliyeva NZ. Combined effect of salinity stress on the potential dynamics of NADPH-generating enzymes in corn seedlings N.Z.Aliyeva, Z.M.Mamedov// 11th International Conference: Achievements & Challenges in Biology Devoted to 120th Anniversary of professor Miralı Akhundov, 2022, p. 202-204.
- [3] Alvarez CE. Molecular adaptations of NADP-malic enzyme for its function in C₄ photosynthesis in grasses / C.E.Alvarez, A.Bovdilova, A.Hoppner [et al.] // *Nature Plants*, 2019. 5, p. 755-765.
- [4] Asai S. A plastidic glucose-6-phosphate dehydrogenase is responsible for hypersensitive response cell death and reactive oxygen species production / S.Asai, M.Yoshioka, H.Nomura [et al.] // *Plant Pathology*, 2011. 77, p. 152-162.
- [5] Corpas FJ. Activation of NADPH-recycling systems in leaves and roots of *Arabidopsis thaliana* under arsenic induced stress conditions is accelerated by knock-out of Nudix hydrolase 19 (AtNUDX19) gene / F.J.Corpas, S.Aguayo- Trinidad, T.Ogawa [et al.] // *Journal of Plant Physiology*, 2016. 192, p. 81-89.
- [6] Gayatri M. Homeologue specific gene expression analysis of two vital carbon metabolizing enzymes-citrate synthase and NADP-isocitrate dehydrogenase-from wheat (*Triticum aestivum* L.) under nitrogen stress: homeologue specific gene expression of CS and NADP-ICDH / M.Gayatri, A.K.Rani, S.K.Mahato [et al.] // *Appl. Biochemistry and Biotechnology*, 2019.188, p. 569-584.
- [7] Hu C. NADPH Oxidases: The Vital Performers and Center Hubs during Plant Growth and Signaling / C.Hu, P.Wang, P.Zhang [et al.]: [Electronic resource] / *Cells*, 2020, 9(2), 437.
- [8] Kareem A. Mosa , Ahmed Ismail , Mohamed Helmy, *Plant Stress Tolerans, An Integrated Omics Approach*, 2017, v. 3, p.379-389.
- [9] Kopeck, R., Kameniarova M, Cenry M, Novak J. / *Abiotic Stress in Crop Production* / [Electronic resource]. *International Journal of Molecular Sciences*, 2023, 24(7), 6603.
- [10] Kasumov NA, Abbasova Zİ, Gündüz G. Effects of Salt Stress of the Respiratory Components of Some Plants // *Turkish Journal of Botany*, 1998. 22, p. 389-396.
- [11] Khalilov RI, Nasibova AN. The EPR parameter's investigation of plants under the influence of radiation factors // *Acta Botanica Caucasica*, 2022. 1(1), p. 48-52.
- [12] Kharbech O. Alleviation of Cr(VI)-induced oxidative stress in maize (*Zea mays* L.) seedlings by NO and H₂S donors through differential organ-dependent regulation of ROS and NADPH-recycling metabolisms / O.Kharbech, H.Houmani, A.Chaoui [et al.] // *Journal of Plant Physiology*, 2017. 219, p. 71-80.
- [13] Kumar S. Abiotic Stresses and Their Effects on Plant Growth, Yield and Nutritional Quality of Agricultural Produce // *International Journal of Food Science and Agriculture*, 2020. 4(4), p. 367-378.